

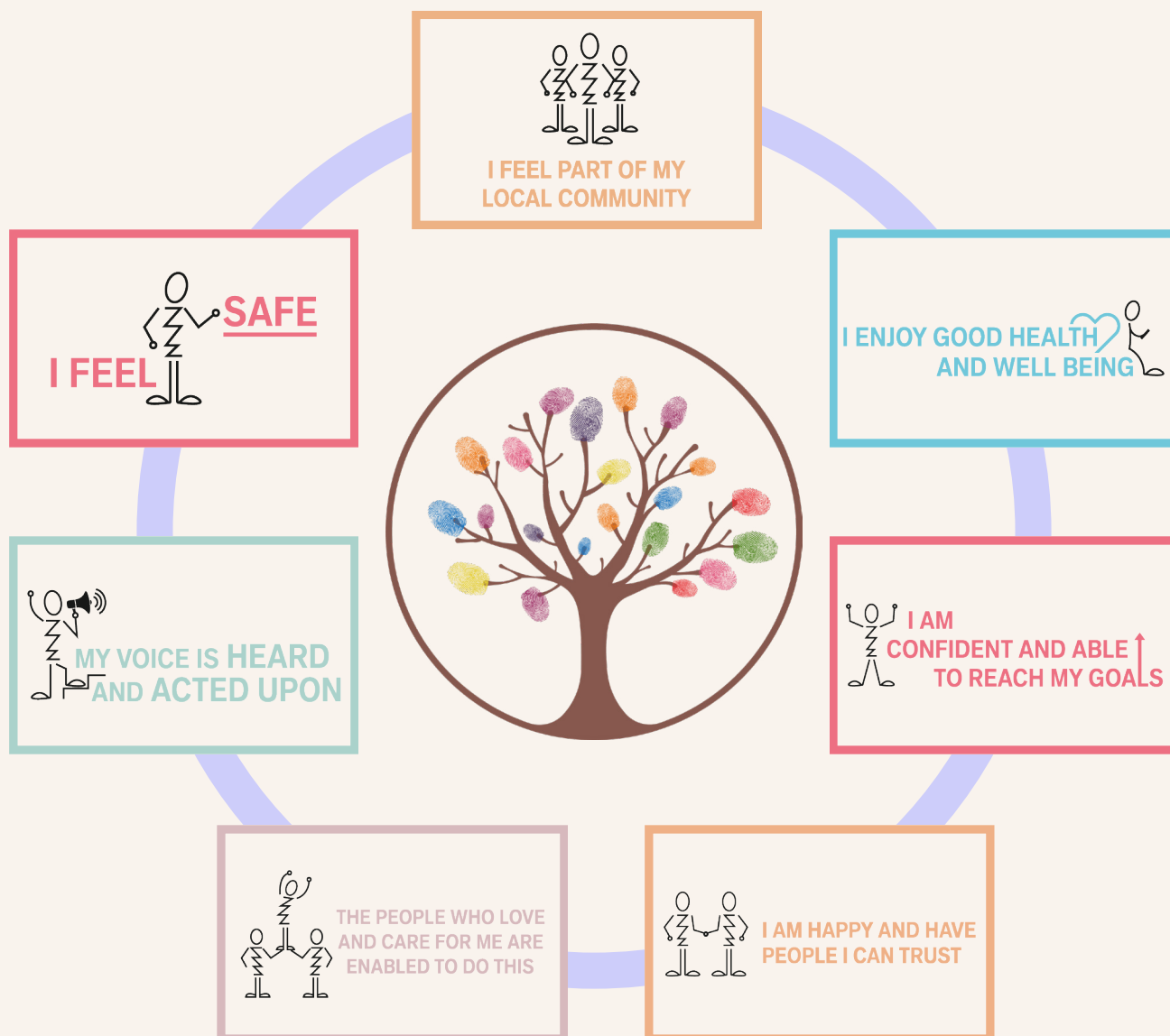


STOCKPORT OUTCOMES FRAMEWORK FOR CHILDREN & YOUNG PEOPLE WITH SPECIAL EDUCATIONAL NEEDS AND DISABILITIES (SEND)

STOCKPORT OUTCOMES FRAMEWORK FOR CHILDREN & YOUNG PEOPLE WITH SPECIAL EDUCATIONAL NEEDS AND DISABILITIES (SEND)

As set out in our [SEND Strategy](#), our vision is for all children and young people with special educational needs and disabilities (SEND) to have the best start in life. We want all children and young people to be happy, prepared for adulthood and able to achieve their goals. We want families to feel supported, confident, resilient and connected to their community.

To support this vision we have co-designed seven I Statements with parents, carers and young people. These Statements will underpin work across all areas so we can ensure the best possible outcomes for children and young people.



We will all work well together as outlined in our [Co-Production Charter](#) to develop our framework and measure success on these outcomes rather than our actions.

For more information visit our [Local Offer](#)