

History

What is crime and punishment and how has it changed throughout history?

Exploring a theme in British history that extends pupils' chronological knowledge beyond 1066 – crime and punishment.

Science

What do scientific symbols mean?

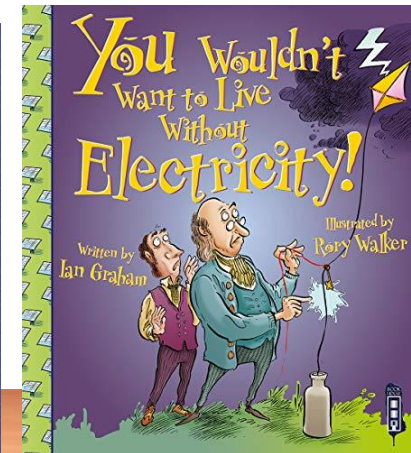
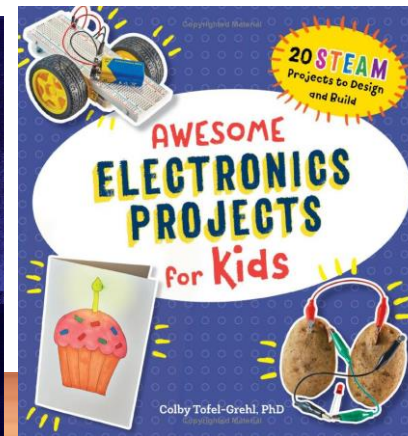
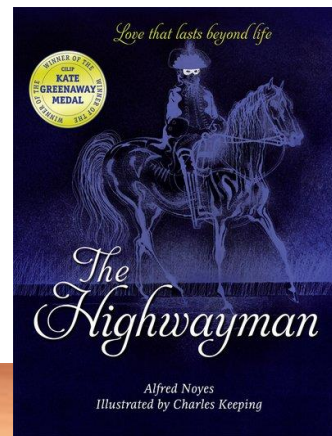
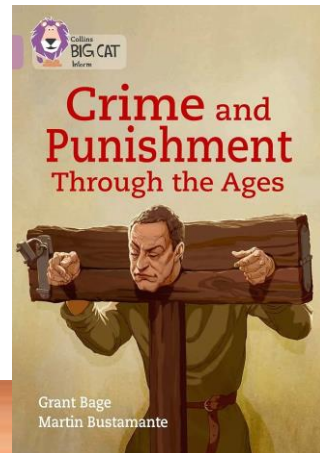
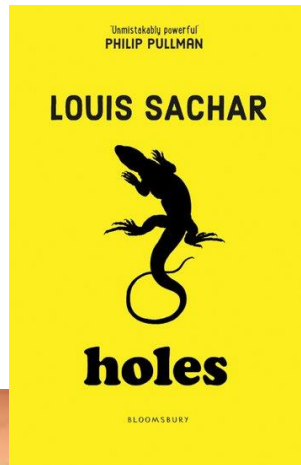
How do variations in components influence a circuit?

Understanding scientific symbols and how voltage has an impact on the working of different components.

Art and Design

How does the work of a craftsperson/design reflect their personality? How does exploration enable me to create models that reflect my personality?

Use sketchbooks to record their observations and use them to review and revisit ideas. Create models to help achieve a desired outcome.



Science

How does light travel? How does the eye work? How do we see the things around us?

Understanding that light travels in straight lines and that objects are seen because they give out or reflect light.

Geography

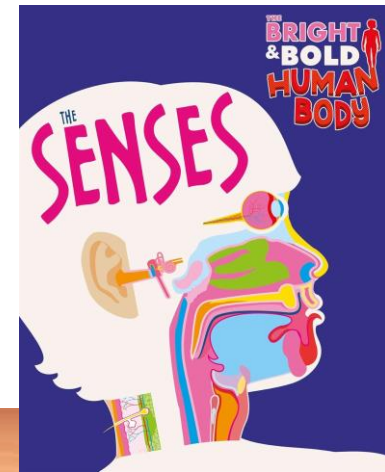
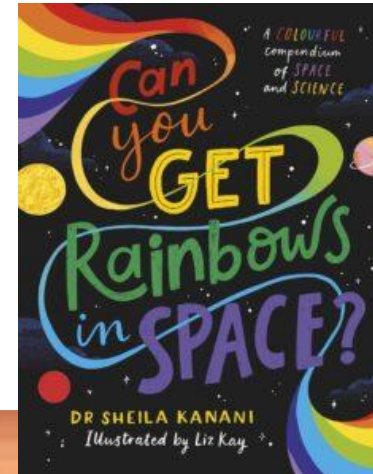
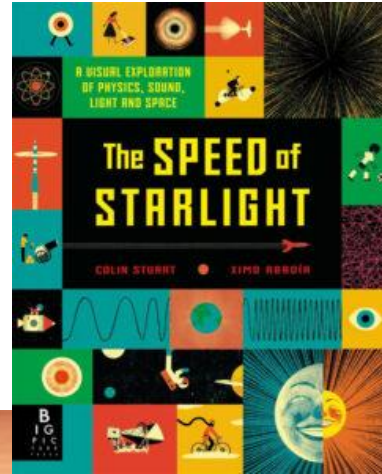
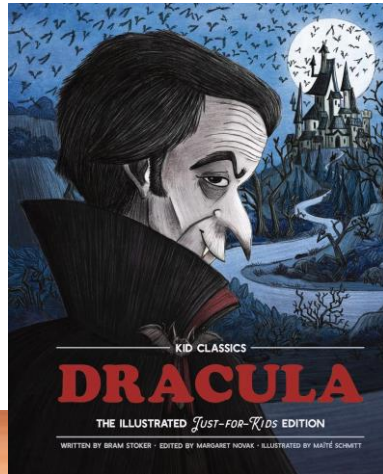
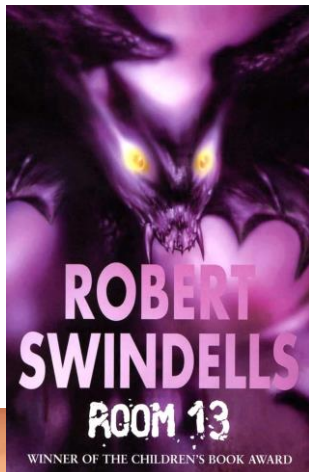
What are the human and physical features of the UK? How is land used in the UK? Are natural resources evenly distributed?

*Economic activity in the UK.
Distribution of natural resources.*

Design Technology

What makes an effective game for younger children? How can we accurately measure, cut and join pieces of wood?

Research and develop designs that are fit for purpose.



	Autumn 1	Autumn 2	Spring 1	Spring 2	Summer 1	Summer 2
Maths	<p>Place value</p> <p>Addition, subtraction, multiplication and division</p>	<p>Fractions</p> <p>Converting units</p>	<p>Ratio</p> <p>Algebra</p>	<p>Fractions, decimals and percentages</p> <p>Area, perimeter and volume</p>	<p>Shape</p> <p>Position and Direction</p>	<p>Themed projects that provide consolidation of taught concepts</p>
English	<p>Louis Sahar – Holes Discussion – Should children be sent to Camp Green Lake?</p> <p>Alfred Noyes – The Highwayman Narrative – characterising speech</p> <p>Dracula Recount – Letter from Harker Non-chronological report – Who is Dracula?</p>		<p>Lindsay Galvin – Darwin’s Dragons Narrative – Continuing the story</p> <p>Pandora Discovered Persuasive writing – Should people go to Pandora? Poetry – Link to ‘The Lost Words’</p>		<p>Emma Carroll – Letters from the Lighthouse Narrative – Characterising speech Non-chronological report – Surviving an air raid Recount – Letter from an evacuee</p> <p>Shaun Tan – The Arrival Poetry – Creating imagery</p>	
Science	<p>Electricity Why does the level of voltage affect the function of components within a circuit?</p>	<p>Light How do we see the things around us? Working scientifically</p>	<p>Living things and their habitats How do we classify living things? Who was Carl Linnaeus? Why do we use classification systems?</p>	<p>Evolution and inheritance What does an offspring inherit from their parents? How have living things evolved throughout time? How do animals adapt to their surroundings?</p>		<p>Animals, including humans What is the circulatory system and how does it work? How can a person’s lifestyle affect their body?</p>
Working Scientifically						

Music

Charanga

How does music bring us together?

Developing melodic phrases

How does music connect us with our past?

Understanding structure and form



High Lane Primary School

Creating the future, today.

PE

Autumn 1: Gymnastics and Tag-Rugby

How can we create sequences that include counter-balances with a group? How can we create goal scoring opportunities using a range of tactics?

Autumn 2: Dance and Hockey

What are the rules of hockey and how do you officiate a game? What skills are needed to dance effectively as a group?

Computing

Autumn 1: Online Safety

What are the benefits and risks of internet-ready devices? Why is it important to have a balance between screen-time and other parts of our life?

Autumn 2: Coding

How can 2Code be used to create a text-based game?

Autumn 2024-2025

PE days: Monday and Thursday

**Homework: Monday and returned
on Friday**

Library: Monday

PSHE

Relationships

How do friendships change as we grow?
How can we build positive relationships? What does it mean to be a positive role model?

Spanish

The verb 'ir': What are the different parts of the irregular verb 'ir'?

Transport: What different forms of transport do I use? How can I communicate this to others?

In the classroom: What is in my classroom?

RE

Autumn 1: Expressing

Is it better to express your religion in arts and architecture, or in charity and generosity?

Autumn 2: Believing

What does religion say to us when life gets hard?
Why is there suffering?